



**“NETWORK OF DANUBE WATERWAY ADMINISTRATIONS”**  
South-East European Transnational Cooperation Programme

**TEMPLATE**

**STATUS QUO REPORT ON WATERWAY ADMINISTRATION**

<b>Document ID:</b>		
<b>Activity:</b>	Act. 6.1	
<b>Author / Project Partner:</b>	<b>Date:</b>	<b>Version:</b>
Jaroslav Sabo	December 4, 2009	

## **1 OVERALL OBJECTIVE OF THE REPORT AND RELATION TO OTHER NEWADA TASKS**

Activity 6.1 deals with organizational and strategic issues of the waterway administrations. As a starting point the “Board of Directors” shall elaborate a status quo report of their waterway administrations (Task 6.1.2.). This report shall include general information on the organizational and legal structures, the existing tasks and objectives as well as the available resources of each waterway administration. Based on this information a SWOT analysis (Strengths-Weaknesses-Opportunities-Threats) shall be elaborated for each waterway administration, which shall be presented and discussed during a Board of Directors meeting.

The results of the status quo report are the basis for the discussions between the participating directors on common future objectives of waterway administrations on the river Danube (Task 6.1.3.). Based on these findings a set of recommendations shall be elaborated for every waterway administration, which aims at optimizing the framework conditions of the respective waterway administration (Task 6.1.4.).

## 2 ELEMENTS OF THE STATUS QUO REPORT:

### 2.1. Legal background of your waterway administration

*What is the legal basis respectively background of your waterway administration? Since when does this legal background exist?*

SLOVAK WATER-MANAGEMENT ENTERPRISE, state company (hereinafter referred to as „SVP, š. p.“) with its corporate domicile in Žilina, was established by the establishing decree No. 3555/1996-100 on 19th December 1996 according to the related regulations of the Act No.111/1990 Coll. on state owned Enterprises in valid wording as a state enterprise for satisfying the public utility interests, which operates in the whole Slovakia and whose basic purpose is satisfying the public utility interests and administration of significant water flows and water constructions built on them as well as administration of particular river basins. SVP, š. p. was founded on 1st July 1997 from the assets and as a judicial successor of former state enterprises of river basins, from which it took over their property, rights and duties and which became its independent organisational units with clearly set delegated powers, while the internal organisation arrangement of the enterprise takes in an account the existence of natural hydrological basins to their full extent. On the ground of the Ministry of Agriculture of the Slovak Republic decree No. 1469/2001-250/180 from 14th March 2001 and its Amendment No 1 from 29th March 2001 the former Research Institute of Meliorations and Site Planning Bratislava joined the enterprise SVP a contributory organisation, out of which the separate branch – Hydro-meliorations was formed. Following the Regulation § 40b/ par. 5 Act of the National Council of the Slovak Republic No 139/2003 Coll. from 9th April 2003 that changes and completes the Act of the NC SR No 575/2001 Coll. on organisation activities of the government and the organisations of central authorities as amended by later regulation and by which the Act No 312/2001 Coll. on state service and amendments of several acts as amended by later acts is completed, the establishing competence to SVP, š. p., passed from the Ministry of Agriculture over to the Ministry of Environment of the Slovak Republic with effect from 1st May 2003. By the decrees of the Ministry of Agriculture of the Slovak Republic No 2018/03-420/116 and 2019/03- 420/117 dated 11th March 2003 on establishment of the enterprise Hydromeliorácie, š. p. /Hydro-meliorations, state-owned enterprise/ Bratislava its property /specified within Overall Investigatory and Delivery Protocol and representing basically irrigation and dewatering facilities/ was exempted following the Regulation §§3,4 and 6 of the Act No. 111/1990 Coll. on state enterprises as amended from SVP, š. p., in line with the mentioned decree and from the 1st July 2003 the property

became an ownership of the independent state-owned enterprise Hydro-meliorations Bratislava. On the same date on the basis of a particular decree of the general director of SVP, š. p., the internal organisational structure – the branch Hydro-meliorations – was dissolved. In respect to the implementation of regulations related to restructuring, reorganisation and rationalisation of the Enterprise and derived from implementation of the Framework Directive of EU on Water in the Slovak Republic environment with effect from 1st May 2004 the following organisation changes were made:

- a. all branches the Danube River Basin in Bratislava, the Vah River Basin in Piestany, the Hron River Basin in Banska Bystrica and the Bodrog and Hornad River Basin in Kosice were dissolved, new branches – the branch Bratislava, the branch Piestany, the branch Banska Bystrica and the branch Kosice were founded
- b. instead of so called territorial branches, the works Dunaj Bratislava, the works Waterwork Gabcikovo and the particular branches of river basins were established and their operation follows also partial river basins and set territories of basins in the Slovak Republic.

By the Decree of the Ministry of Environment of the Slovak Republic dated December 14, 2007, No. 81/2007 – to Aug. 1 it came to change of the SVP, š. p. corporate domicile. With effectiveness from February 20, 2008 the corporate domicile is at Námestie gen. M. R. Štefánika 1, 010 71 Žilina.

*Other official national bodies/authoroties dealing with the waterway Danube are*

*What is the legal relation of your waterway administration to other official national bodies / authorities (e.g. Ministries, port authorities, etc.) dealing with the waterway Danube?*

Other official national bodies/authoroties dealing with the waterway Danube are **State Navigation Administration** (SPS) and **Slovak Shipping and Ports s.c.** (SpaP, a.s.).

The role and position of the **State Navigation Administration** results from the Inland Navigation Act (Act. No. 26/1964 Coll. on inland navigation as amended by Act No. 126/1974 Coll., and from 1st January 2000 by Act No. 338/2000 Coll. as amended by later regulations).

Activities directly related to the basic purpose of establishment of the SPS:

1. performing the state Professional inspection of:
  - a. administration and maintenance of waterway and ports
  - b. operation of vessels on waterway and in ports

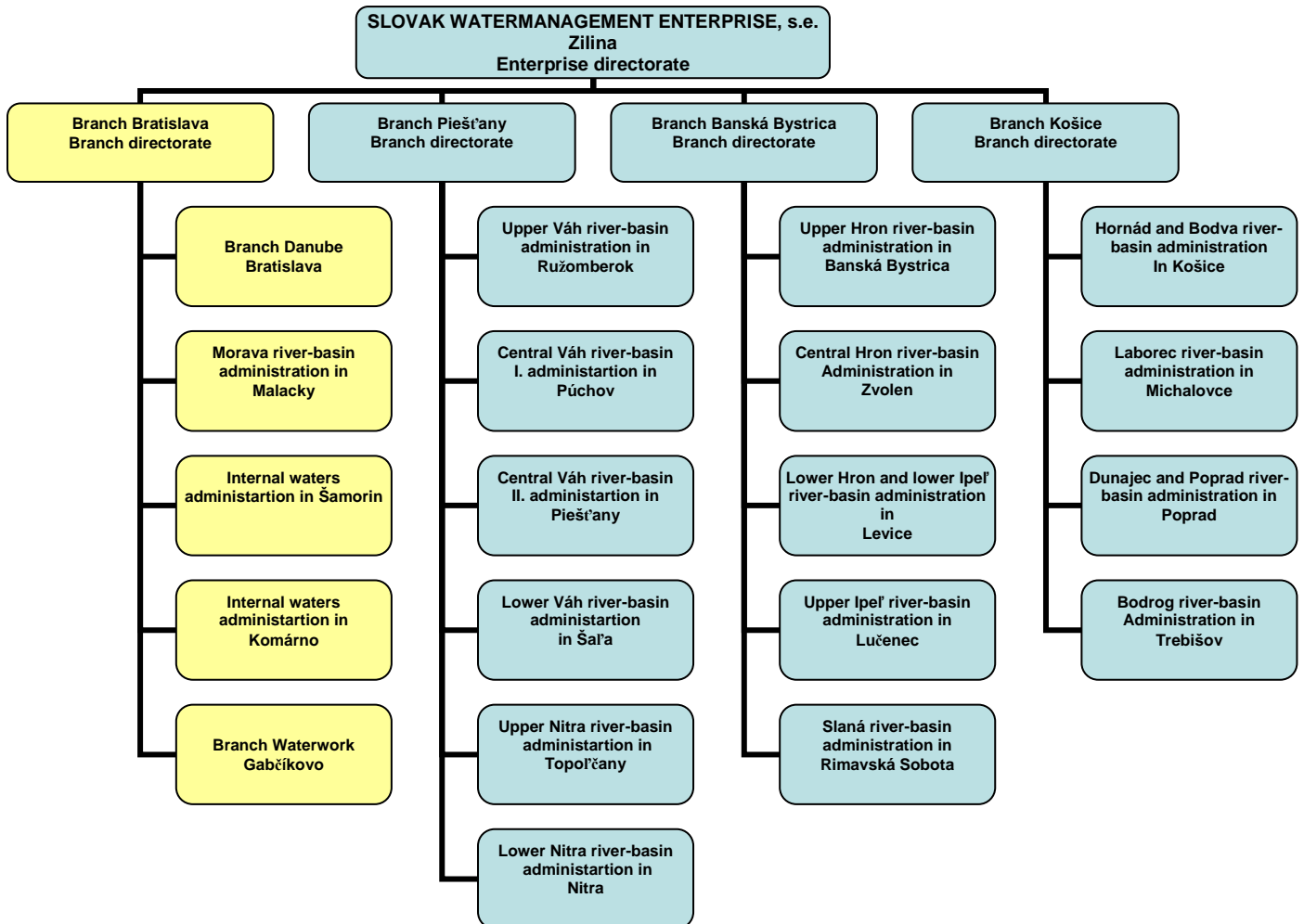
- c. professional competence of crew members of vessel and operators of lock chambers
  - d. capability of vessels, with the exception of exploiting equipment as stated in the special regulation; in case of vessels permanently put out of operation shall perform inspection of their removal
  - e. observance of safety rules for inland navigation
2. decision-making in 1st level administrative procedure,
  3. imposing penalties for infringement of provisions of the Inland Navigation Act and hearing offences,
  4. keeping the central register of vessels,
  5. gauging of vessels,
  6. professional investigation of navigation accidents,
  7. issuing navigation notices,
  8. levying charges for use of public ports by vessels, other activities

**Slovak Shipping and Ports s.c. (SpaP, a.s.)** has been a dominant company in the field of transport, transshipment and warehousing of goods, forwarding services, repair works and building of new vessels on the territory of the Slovak Republic. The company offers logistics services, being connected with transportation of all kinds of goods on the river Danube as well as on the whole network of West European waterways between the North Sea and the Black Sea. The company SPaP a.s. with its technical equipment, high-quality services and skilled workers, has an interesting geographic and logistic location in the field of warehousing, transshipment and transport of cargoes.

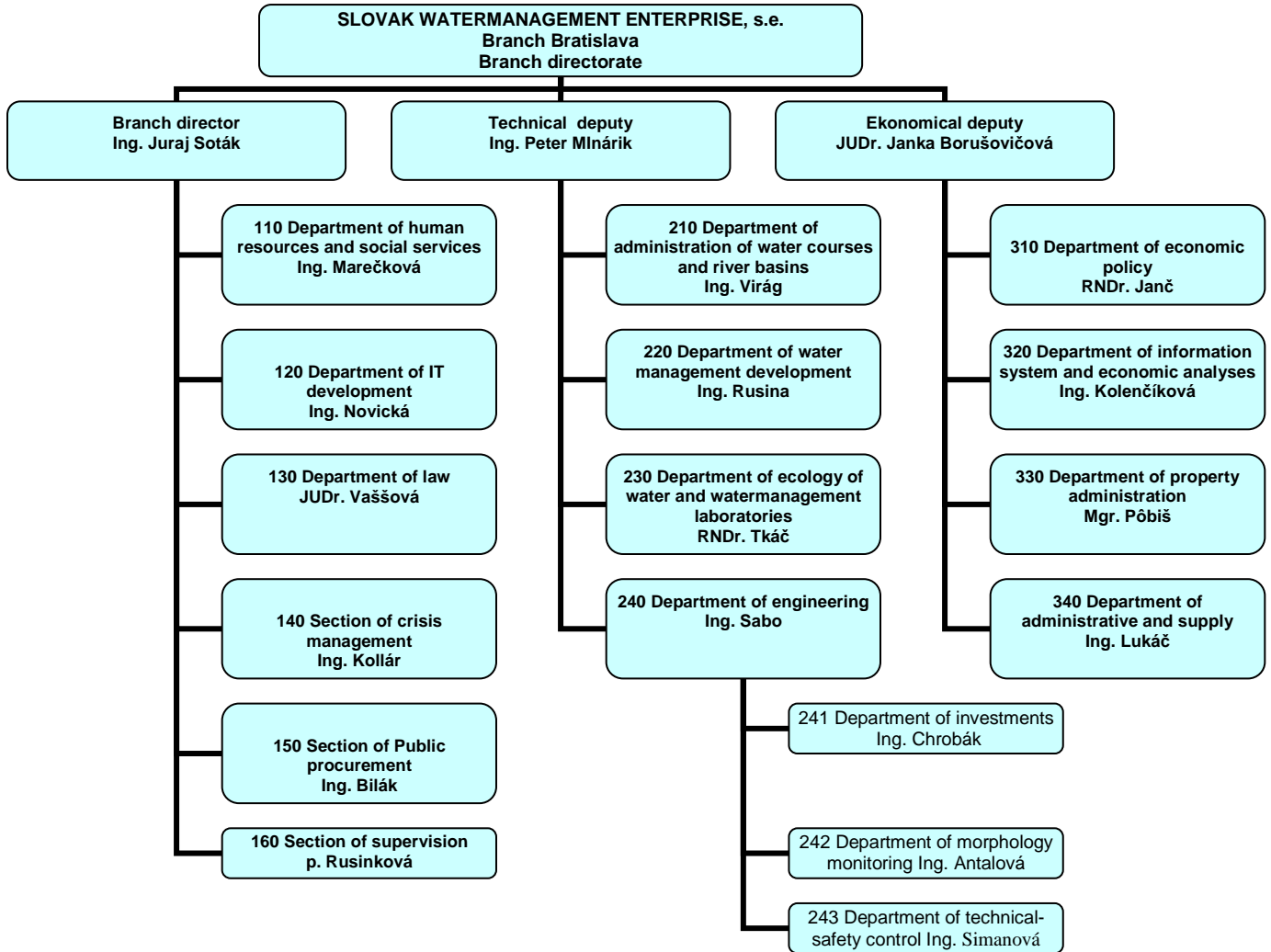
## 2.2. Organizational structure and main tasks of your waterway administration

What is the general organization of your waterway administration (organizational chart)?

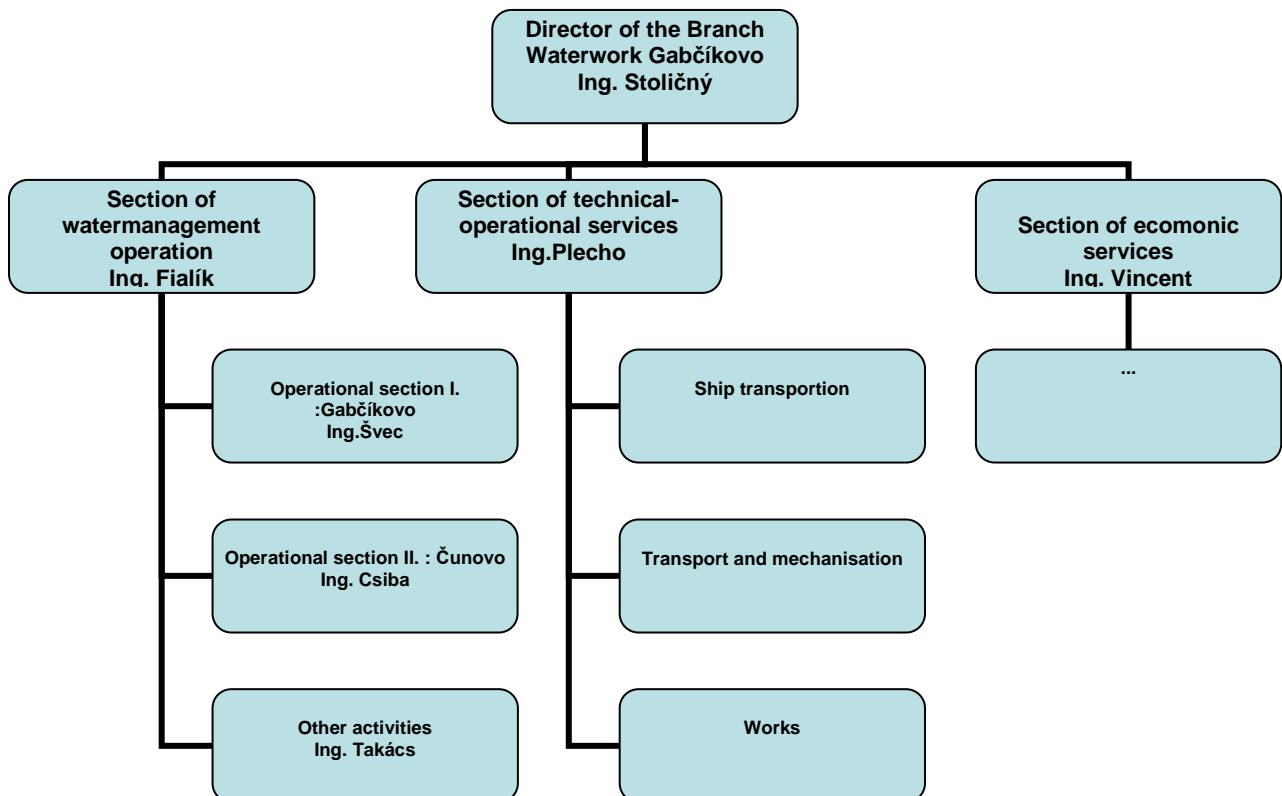
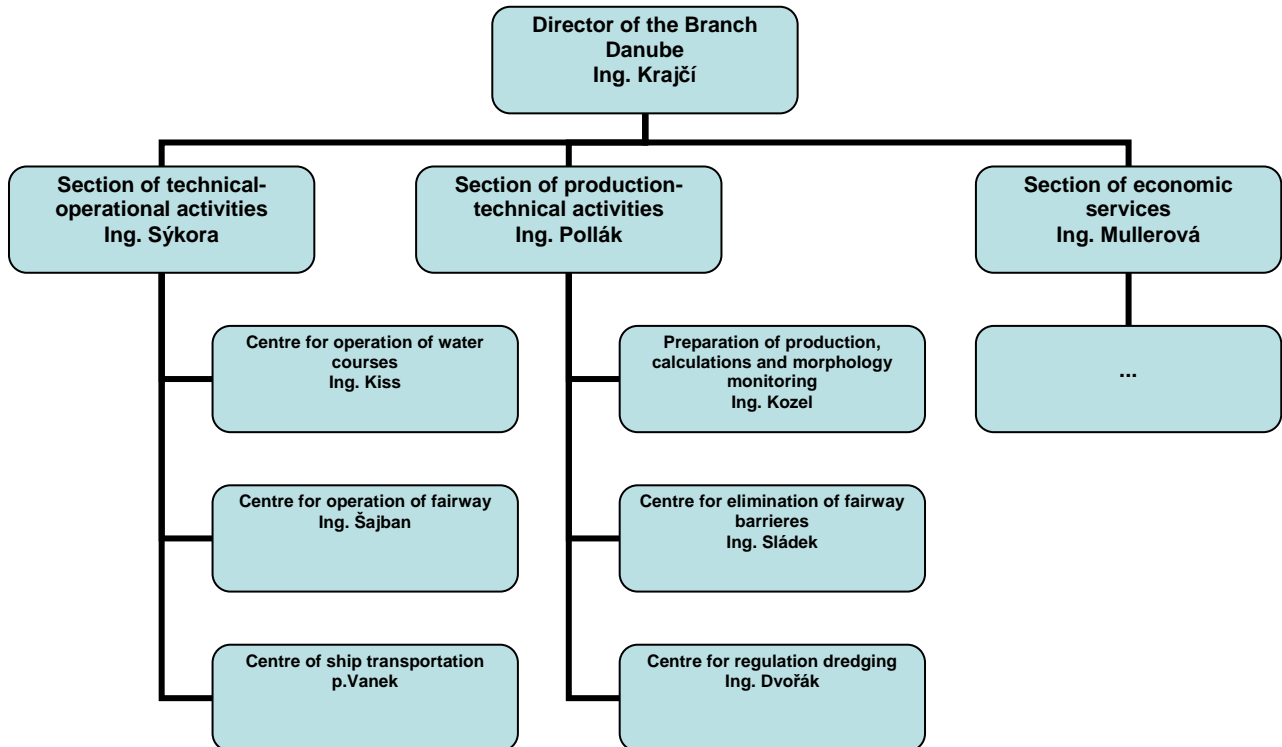
Organizational chart on the level of the enterprise directorate:



Organizational chart on the level of directorate of branch Bratislava:



Organizational chart on the level sub-branches of Branch Bratislava:





*What are the main responsibilities/tasks of your waterway administration?*

The main subject of the Enterprise business is administration and protection of surface and ground waters, complex hydro-ecological activities in river basins and covering other tasks, preferably:

- satisfying the public utility interests,
- administration of commended water flows and ensuring all their functions, execution of administration with water flows and water-management works built on them,
- assigning efficient protection of water, water flows and water-management works,
- execution of particular activities related to administering the boundary flows and consequent activities issuing from particular contracts related to bordering flows,
- ensuring development, operation and administration of water roads, creation of conditions for water flows and reservoirs use for passages or other economic use,
- ensuring supplies of surface water from water flows and water reservoirs, including its use for electric energy production and in the extend set by state authorities for water administration,
- ensuring development, operation and maintenance of waterways, creating the conditions for utilization of water flows and reservoirs for shipping and other national-management use,
- performance of security works for protection from floods on water flows and waterworks, fulfilling tasks issuing from flood-preventive plans and decisions of flood-commissions during flood-protection activities,
- execution of building, mounting and maintenance works, extraction of water materials, extraction and production of gravel aggregates and cutting down trees growing outside the forest within the resort,
- monitoring and evaluation of water quality in water flows, water off-takes and other water handling, withdrawal of payments according to special regulations,
- administration of fishery section of the Enterprise,
- fulfilling other tasks issuing for the state enterprise from the Water Act and related judicial standards, including supervision in protected water-management territories,
- execution of other supporting and collateral activities to such an extent so that not to affect fulfillment of the main subject of business

*How are these responsibilities reflected in the organization of your waterway administration? Which departments are responsible for which tasks?*

Department of administration of water courses and river basins together with sub-branches is responsible for administration of commended water flows and ensuring all their functions, execution of administration with water flows and water-management works built on them. The same department, together with sub-branch Danube and Department of water management development are responsible for development, operation and administration of water ways, creation of conditions for water cruise (river Danube). Department of ecology of water and water management laboratories is mainly responsible for the monitoring and evaluation of water quality in water flows, water off-takes and other water handling. Department of investments is mainly responsible for preparation, realization and constructions supervision of preventive flood protection measures (constructions).

### **2.3. Available resources of your waterway administration**

*What are the human resources of your waterway administration? How many employees work in the different departments?*

Average number of SVP employees in year 2008 was 3 708 (4 496 in year 2002). Total number of employees of branch Bratislava (information from December 2009) is 1 024, from that 724 as a work force and 300 technical and economic workers.

Number of employees of the SVP, branch Bratislava:

Branch directorate Bratislava	132 employees (16 as a work force)
Branch Danube Bratislava	388 employees (334 as a work force)
Morava river-basin administration in Malacky	106 employees (80 as a work force)
Internal waters administration in Samorin	122 employees (97 as a work force)
Internal waters administration in Komarno	135 employees (107 as a work force)
Branch Waterwork Gabčíkovo	141 employees (90 as a work force)

Number of employees of the branch Bratislava directorate in the different departments:

Department of administration of water courses and river basins	12 employees
Department of water management development	11 employees
Department of ecology of water and water management laboratories	21 employees (4 as a work force)
Department of investments	10 employees
Department of morphology monitoring	11 employees (3 as a work force)
Department of technical safety control	1 employee
Other departments	66 employees (9 as a work force)

*What are the main technical assets of your waterway administration (e.g. surveying equipment, vessels, etc.)?*

The SVP ensures administration and operation of the state property according to the following structure:

Total area of river basins	49 015 km
Length of water flows in total	32 217 km
of which: a) adjusted water flows	8 209 km
b) not adjusted water flows	30 008 km
Length of waterworks flows	1 067 km
Length of protection dikes	3 135 km
Length of drainage channels	1 605 km
Length of artificial channels and upstream waterways	67 km
Length of floating channels	25 km
Water reservoirs in total	277
of which: a) water-supply reservoirs	8
b) other water reservoirs	269
Total volume of water reservoirs	1 908 368 th.m <sup>3</sup>
Controllable volume of water reservoirs	1 594 648 th.m <sup>3</sup>
Retention volume water reservoirs	205 275 th.m <sup>3</sup>
Storage volume of water reservoirs	1 298 948 th.m <sup>3</sup>
Total surface of water reservoirs	231 km <sup>2</sup>
Total number of barrages	216

Ship chambers in total	15	
Small hydroelectric power plant	38	
Installed capacity of small hydroelectric power plants	9 MW	
Pumping and re-pump stations in total	72	
of which: a) pumping stations of internal waters number		72
b) irrigation pumping stations number		0
c) dewatering stations of solid and water conservation facilities number		0
Historical waterworks objects	23	
Waste water volume discharged into river flows	399 760 th.m <sup>3</sup>	

Information about technical assets of SVP :

Small motor-less vessels	41 (8 Europe)	
Small motor vessels	81 (8 Europe including Targa measuring vessel)	
Passenger ships (max. 20 passengers)	4 (including surveying (marking) vessel Devin)	
Passenger ships (20 – 80 passengers)	6 (1 Europe – Ondava)	
Floating machines (excavators, cranes, towboats) and cargo vessels		83 (26 Europe)
Marking vessels	2 (PD Cajka, PD Gabcikovo)	

*What is your indicative average annual budget for fulfilling the basic tasks of your waterway administration? What is the mechanism for determining the annual budget (fixed budget on a legal basis or periodic budget negotiations)?*

In the year 2008 the SVP reached the following structure of revenues and expenses:

<b>Revenues in total</b>	<b>125 033 393 €</b>
a) sales in total	74 349 300 €
b) subsidies from budget chapter of the Ministry of Environment of SR	27 672 642 €
c) financial resources from EU funds	381 730 €
d) other revenues	22 629 721 €

<b>Expenses in total</b>	<b>123 118 502 €</b>
a) material consumption	16 641 273 €
b) energy consumption	2 631 348 €
c) services	11 270 132 €
d) wage expenses	37 514 539 €
e) expenses for social security and social expenses	18 958 574 €
f) depreciation of LTA	11 535 353 €
g) repairs and maintenance	5 771 393 €
h) financial expenses	6 221 868 €
i) other expenses	12 574 022 €

The SVP, branch Bratislava reached in year 2008 total revenues 46 806 048 € and total expenses 40 862 876 €. The waterway barriers removal (Danube river) reached expenses 82 985 € and expenses for so called regulating dredging reached 2 157 605 €.

The SVP has partially fixed budget on a legal basis and partially budget depending on negotiations. There is no exact mechanism for determining of the annual budget.

## 2.4. SWOT-Analysis

The SWOT Analysis shall evaluate the Strengths, Weaknesses, Opportunities, and Threats of every waterway administration in relation to the achievement of its objectives. As a first step the main Strengths, Weaknesses, Opportunities and Threats have to be identified and summarized in an overview. The following chart shall illustrate the example of a SWOT-analysis of the transport mode Danube navigation (please note that the synonym term 'impediments' is used instead of the term 'threat'):

<p><b>Strengths</b></p> <ul style="list-style-type: none"> <li>- 44 years of experience in water management</li> <li>- Good relationships with other organizations on national and on Danube region level</li> <li>- State-wide activities</li> <li>- Participation in international projects</li> </ul>	<p><b>Weaknesses</b></p> <ul style="list-style-type: none"> <li>- Limited budget</li> <li>- Staff language barriers</li> <li>- Great average age of the employees</li> <li>- Public relations</li> <li>- Missing legal regulations for financing of activities</li> </ul>
<p><b>Opportunities</b></p> <ul style="list-style-type: none"> <li>- Development of equipment</li> <li>- Cross-border cooperation</li> <li>- Innovation of organisation</li> <li>- Co-financing of activities by EU funds</li> </ul>	<p><b>Threats</b></p> <ul style="list-style-type: none"> <li>- Uncertainty of annual negotiated budget</li> <li>- Political factors</li> <li>- Adequate evaluation of the employees</li> <li>- Motivate young employees for working in water management</li> </ul>

The results of the SWOT-analysis of every waterway administration shall be displayed in a similar design as above mentioned example. The identified points shall be presented by each waterway administration in a Board of Directors meeting and are the basis for the development of future strategies. Following questions can act as guidance for drawing the right conclusions of the status quo situation:

- How can we use and capitalize on each **Strength**?
- How can we improve each **Weakness**?
- How can we exploit and benefit from each **Opportunity**?
- How can we mitigate each **Threat**?

- End of document -